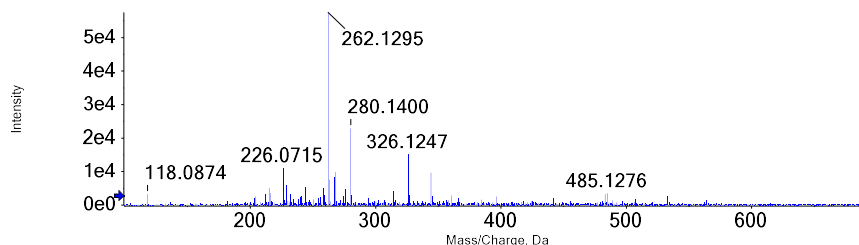


Protective Effect of Ethanol Extract from *Hericium erinaceus* Against Ethanol-Induced Gastric Ulcer by **Guoying Lv, Xiaoya Song, Zuofa Zhang**

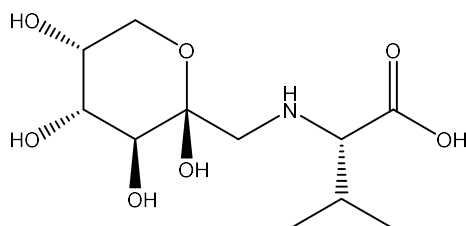
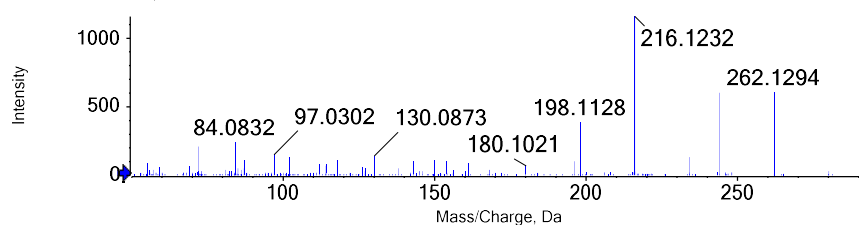
Supplementary Material

MS and MS/MS spectra and structures of compounds 1 to 12

Spectrum from SA-POS.wiff (sample 1) - Sample001, Experiment 1, +TOF MS (100 - 2000) from 1.349 min



Spectrum from SA-POS.wiff (sample 1) - Sample001, Experiment 6, +TOF MS² (50 - 2000) from 1.379 min
Precursor: 280.1 Da, CE: 40.0

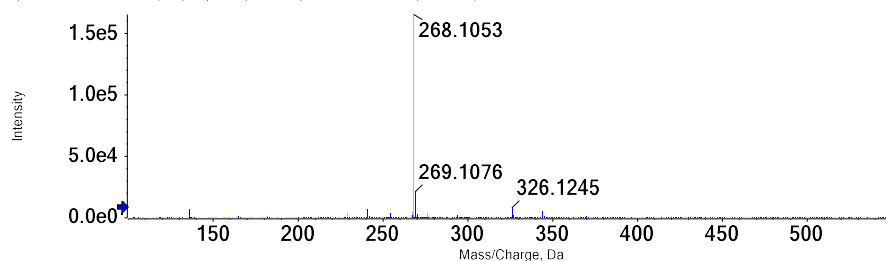


Chemical Formula: C₁₁H₂₁NO₇

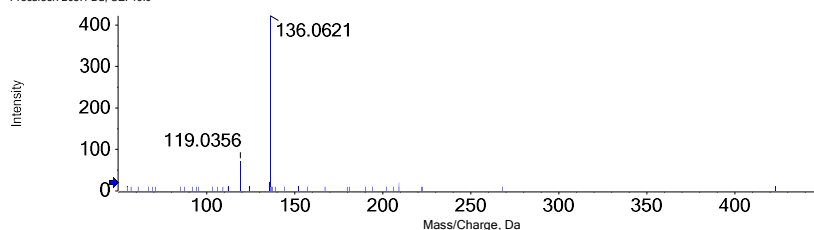
Exact Mass: 279.1318

Compound 1 *N*-(1-Deoxy-D-fructos-1-yl)-L-valine

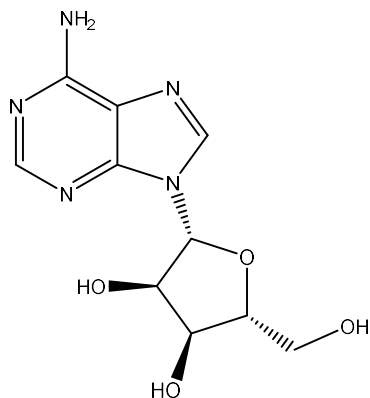
Spectrum from SA-POS.wiff (sample 1) - Sample001, Experiment 1, +TOF MS (100 - 2000) from 1.900 min



Spectrum from SA-POS.wiff (sample 1) - Sample001, Experiment 4, +TOF MS² (50 - 2000) from 1.848 min
Precursor: 268.1 Da, CE: 40.0



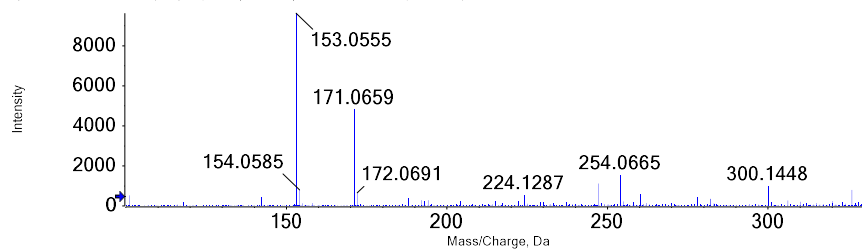
Protective Effect of Ethanol Extract from *Hericium erinaceus* Against Ethanol-Induced Gastric Ulcer by **Guoying Lv, Xiaoya Song, Zuofa Zhang**



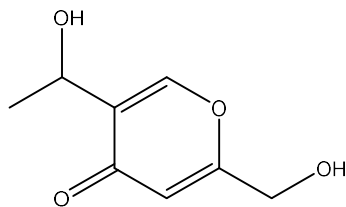
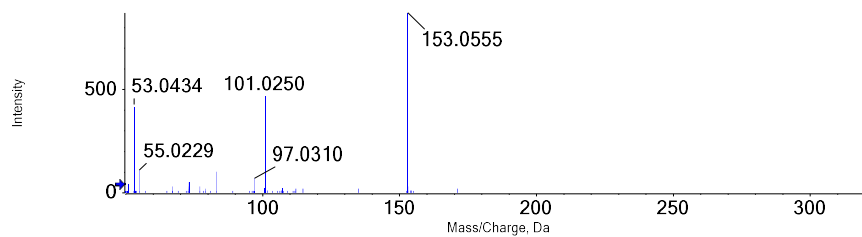
Chemical Formula: $C_{10}H_{13}N_5O_4$
Exact Mass: 267.0968

Compound 2 adenosine

Spectrum from SA-POS.wiff (sample 1) - Sample001, Experiment 1, +TOF MS (100 - 2000) from 2.918 min



Spectrum from SA-POS.wiff (sample 1) - Sample001, Experiment 4, +TOF MS*2 (50 - 2000) from 2.943 min
Precursor: 171.1 Da, CE: 40.0

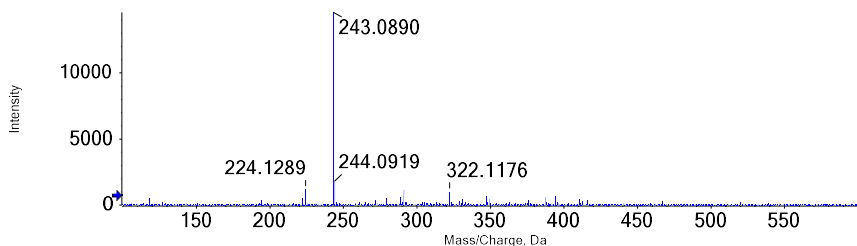


Chemical Formula: $C_8H_{10}O_4$
Exact Mass: 170.0579

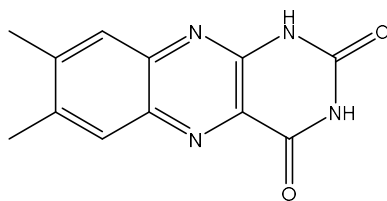
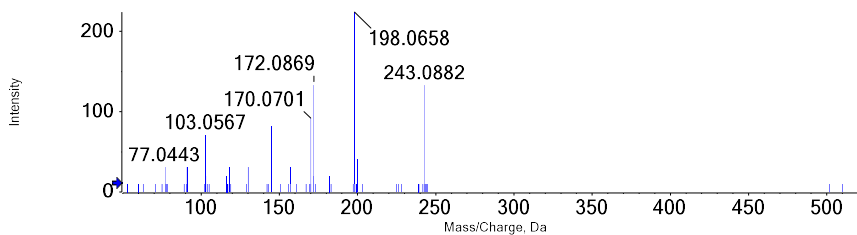
Compound 3 herierin IV

Protective Effect of Ethanol Extract from *Hericium erinaceus* Against Ethanol-Induced Gastric Ulcer by **Guoying Lv, Xiaoya Song, Zuofa Zhang**

Spectrum from SA-POS.wiff (sample 1) - Sample001, Experiment 1, +TOF MS (100 - 2000) from 12.905 min



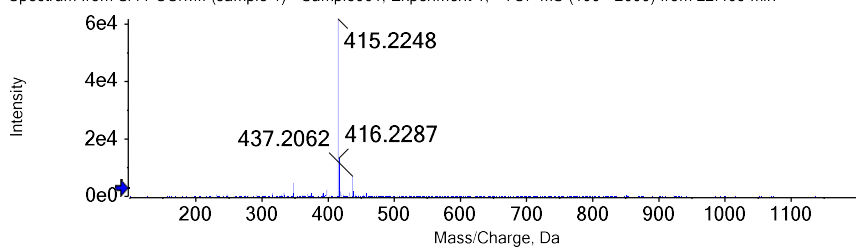
Spectrum from SA-POS.wiff (sample 1) - Sample001, Experiment 2, +TOF MS*2 (50 - 2000) from 12.869 min
Precursor: 243.1 Da, CE: 40.0



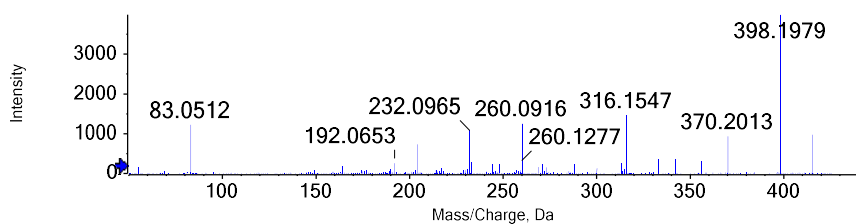
Chemical Formula: C₁₂H₁₀N₄O₂
Exact Mass: 242.0804

Compound 4 lumichrome

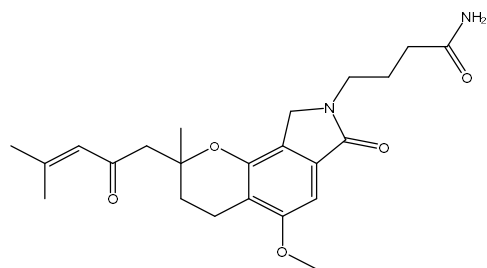
Spectrum from SA-POS.wiff (sample 1) - Sample001, Experiment 1, +TOF MS (100 - 2000) from 22.465 min



Spectrum from SA-POS.wiff (sample 1) - Sample001, Experiment 7, +TOF MS*2 (50 - 2000) from 22.475 min
Precursor: 415.2 Da, CE: 40.0



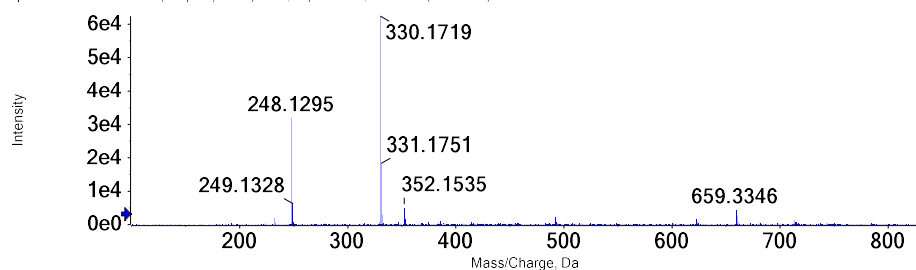
Protective Effect of Ethanol Extract from *Hericium erinaceus* Against Ethanol-Induced Gastric Ulcer by **Guoying Lv, Xiaoya Song, Zuofa Zhang**



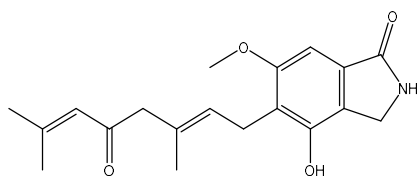
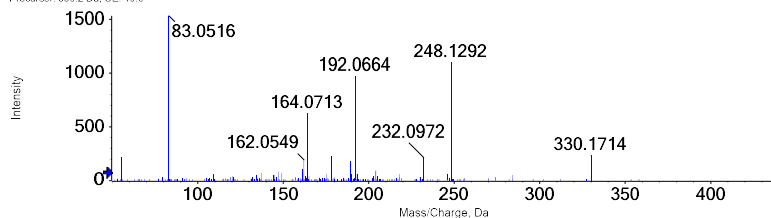
Chemical Formula: $C_{23}H_{33}N_2O_5$
Exact Mass: 414.2155

Compound 5 erinaceolactam E

Spectrum from SA-POS.wiff (sample 1) - Sample001, Experiment 1, +TOF MS (100 - 2000) from 23.074 min



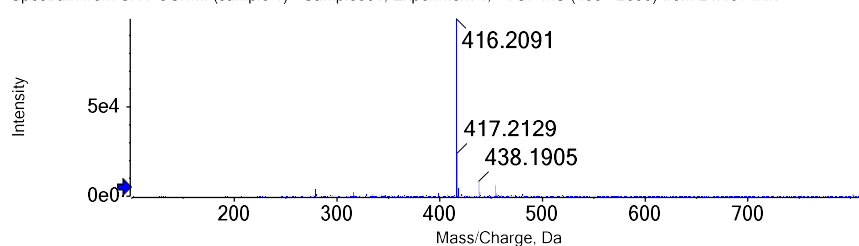
Spectrum from SA-POS.wiff (sample 1) - Sample001, Experiment 4, +TOF MS*2 (50 - 2000) from 23.022 min
Precursor: 330.2 Da, CE: 40.0



Chemical Formula: $C_{19}H_{23}NO_4$
Exact Mass: 329.1627

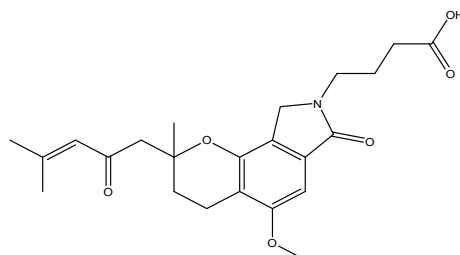
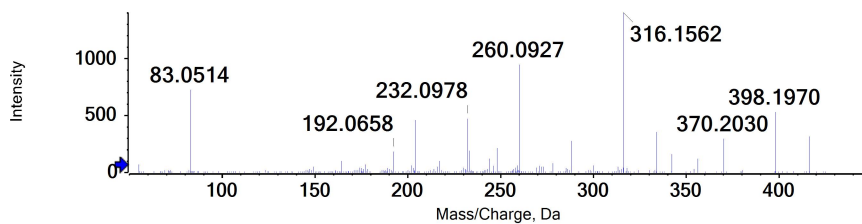
Compound 6 erinaceolactam A

Spectrum from SA-POS.wiff (sample 1) - Sample001, Experiment 1, +TOF MS (100 - 2000) from 24.107 min



Protective Effect of Ethanol Extract from *Hericium erinaceus* Against Ethanol-Induced Gastric Ulcer by **Guoying Lv, Xiaoya Song, Zuofa Zhang**

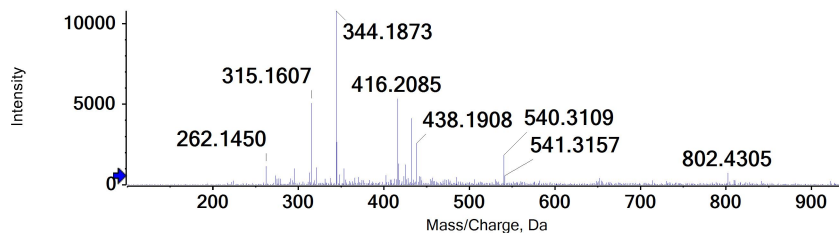
Spectrum from SA-POS.wiff (sample 1) - Sample001, Experiment 7, +TOF MS² (50 - 2000) from 24.079 min
Precursor: 416.2 Da, CE: 40.0



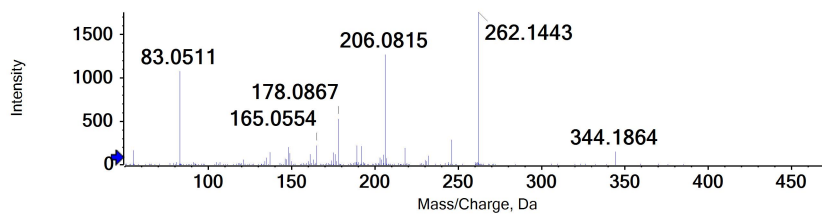
Chemical Formula: C₂₃H₂₉NO₆
Exact Mass: 415.1995

Compound 7 erinacerin N

Spectrum from SA-POS.wiff (sample 1) - Sample001, Experiment 1, +TOF MS (100 - 2000) from 24.481 min

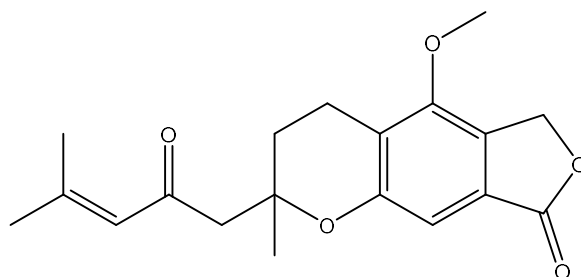
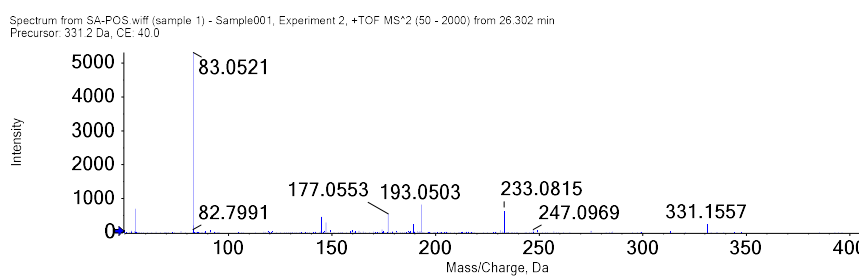
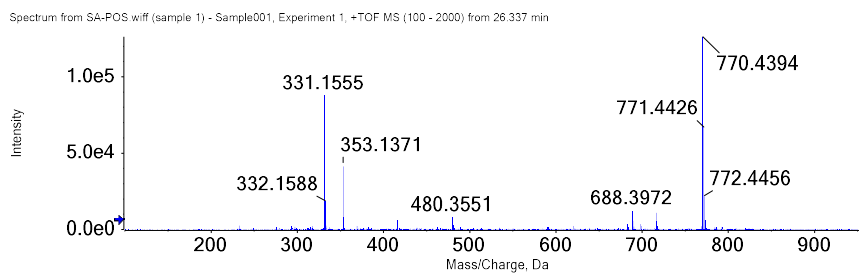


Spectrum from SA-POS.wiff (sample 1) - Sample001, Experiment 6, +TOF MS² (50 - 2000) from 24.414 min
Precursor: 344.2 Da, CE: 40.0



Compound 8 erinacerin M

Protective Effect of Ethanol Extract from *Hericium erinaceus* Against Ethanol-Induced Gastric Ulcer by **Guoying Lv, Xiaoya Song, Zuofa Zhang**

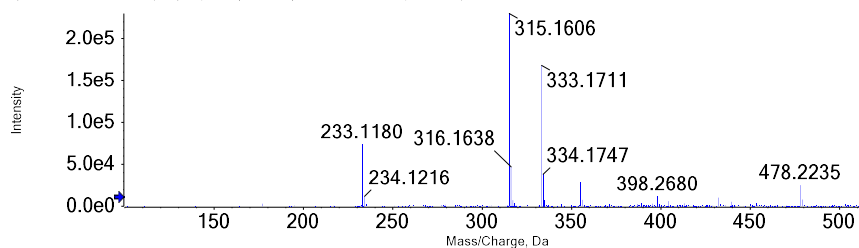


Chemical Formula: $C_{19}H_{22}O_5$
Exact Mass: 330.1467

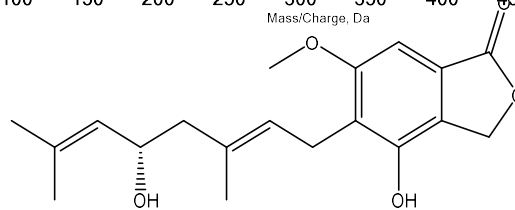
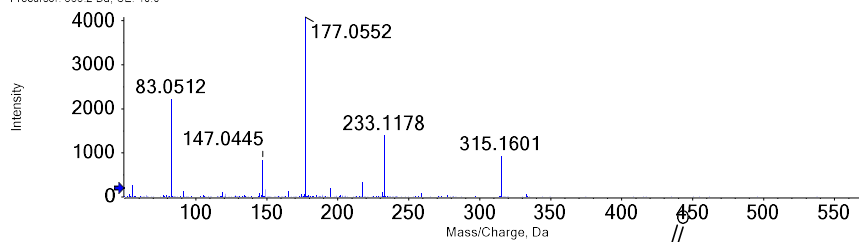
Compound 9 hericenone I

Protective Effect of Ethanol Extract from *Hericium erinaceus* Against Ethanol-Induced Gastric Ulcer by **Guoying Lv, Xiaoya Song, Zuofa Zhang**

Spectrum from SA-POS.wiff (sample 1) - Sample001, Experiment 1, +TOF MS (100 - 2000) from 27.187 min



Spectrum from SA-POS.wiff (sample 1) - Sample001, Experiment 4, +TOF MS*2 (50 - 2000) from 27.118 min
Precursor: 333.2 Da, CE: 40.0

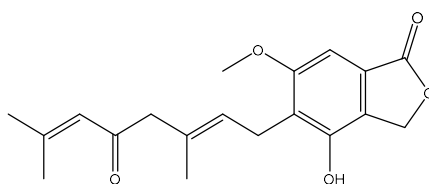
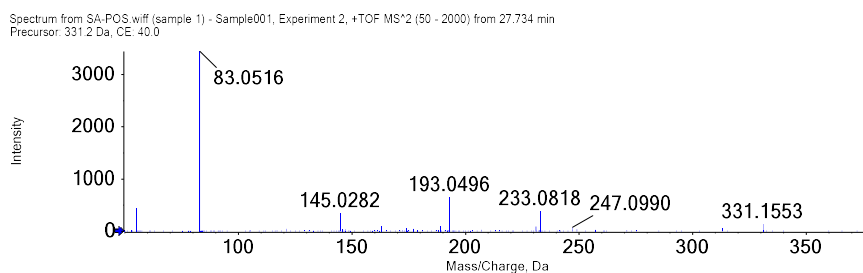
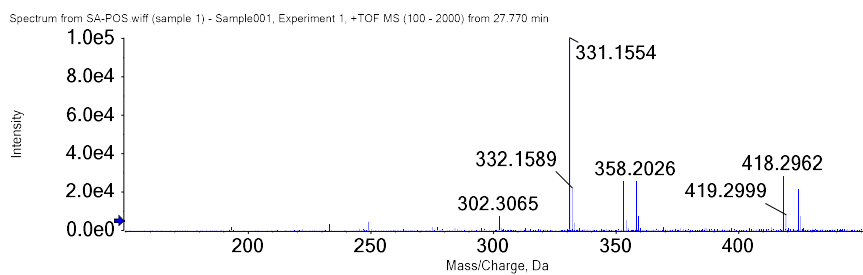


Chemical Formula: C₁₉H₂₄O₅

Exact Mass: 332.1624

Compound 10 erinacerin B

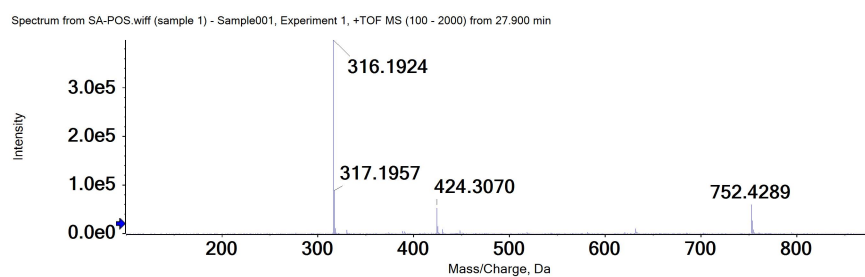
Protective Effect of Ethanol Extract from *Hericium erinaceus* Against Ethanol-Induced Gastric Ulcer by **Guoying Lv, Xiaoya Song, Zuofa Zhang**



Chemical Formula: C₁₉H₂₂O₅
Exact Mass: 330.1467

Compound 11 hericenone A

Protective Effect of Ethanol Extract from *Hericium erinaceus* Against
Ethanol-Induced Gastric Ulcer by **Guoying Lv, Xiaoya Song, Zuofa Zhang**



Compound 12 *N*-de(phenylethyl)isohericerin